



Technical specifications

FJ-1502 HC can embroider caps, flats, bags, finished garments etc. Redesigned to carry a larger sewing field and a smaller sewing arm for difficult areas.

Models:	FJ-1502HC
Needles:	15 / 12
Heads:	2
Weight:	470 kgs
Head Interval:	500mm
EMB. area:	500mm x 400mm
Size:	L=146cm W=113cm H=110cm



FJ-1502HC Main features

- Suitable for cap, finished garment like T-shirt and flat embroidery
- Display real time stitching by 10 inch LCD touch screen
- Support human-computer interaction and multi-task parallel processing
- Control panel is user-friendly
- Pre-sew design trace capable
- Automatic bobbin winder
- Heavy duty steel stand with wheels to ensure stability and mobility
- Maximum speed: 1,200 stitches per minute
- Memory capacity: 20 million stitches or 200 designs
- Machine reads multiple design formats, such as DST, DSB
- 270° wide angle cap system
- Environmentally friendly packaging
- Built-in letters for easy machine installment
- USB input or direct transmission from PC via LAN port or wireless
- Networkable and Wi-Fi capable
- Compact Laminate stable table support work plat
- Built-in universal power supply 110V/60Hz and 220V/50Hz (self-adaptable worldwide)
- DC36V micro-step motor for X & Y axis driving to ensure low noise and less vibration
- Emergency stop button
- Automatic thread trimmer
- Thread break detection
- Optional laser tracing device available
- Multiple hoop sizes for a variety of embroidery needs
- Automatic memory retention
- 16 different Languages available like English, French, Spanish, Portuguese, German, Arabic etc.

Extra-wide embroidery area
supports larger projects!

Suited for all embroidery types

Brand-new technology



Shenzhen FUJA Machinery Co., Ltd
Address: AEE Industry Park, Song Bai Road,
Bao An District, Shenzhen, China.
Tel: +86 755 2720 3604



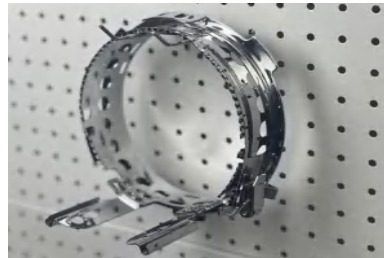
Standard Accessories

New Stable Cap Attachment:



270° cap driver [2sets]

Ear to ear on the cap. To embroidery on the back of the cap. Longer type cap attachment for easy moving.



Cap rings [4sets]

Snap into cap station for embroidery preparation, FUJA cap rings are easy access and adequate inventory.



Cap station [1set]

Easily create an embroidery effect with the cording device, which lays cord on fabric and attaches the cord with transparent zigzag stitches.

Frames/Hoops:



1 × aluminum frame
85×55cm



2 × square hoops
40×40cm



4 × square hoops 30×30cm
4 × round hoops 15cm
4 × round hoops 9cm



4 × round hoops 19cm
4 × round hoops 12cm



The Other Accessories:

Table top

Operation Manual

Tool Kit

Bobbin Winder

USB Drive



1 × All-In-One tools kit



1 × Bobbin winder

Suited for all embroidery types

Brand-new technology

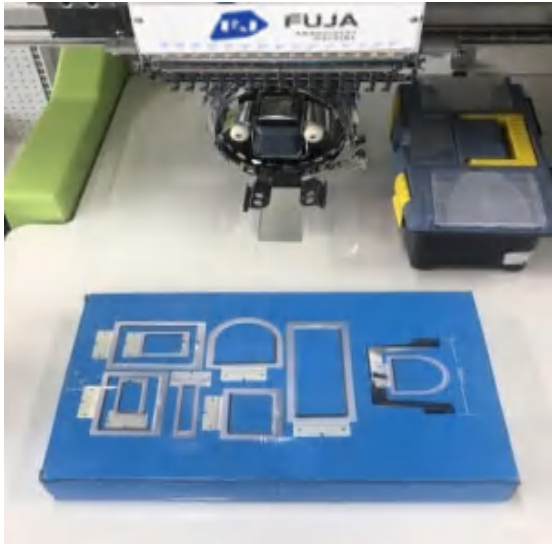


Shenzhen FUJA Machinery Co., Ltd
Address: AEE Industry Park, Song Bai Road,
Bao An District, Shenzhen, China.
Tel: +86 755 27203604

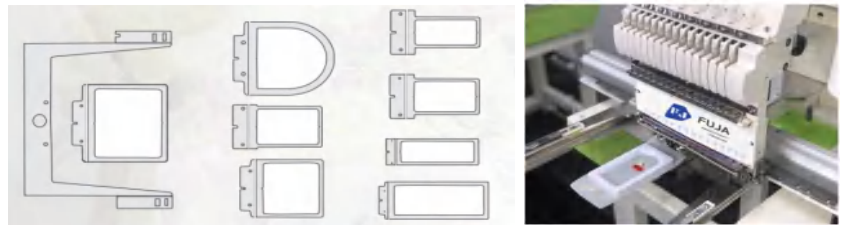


Optional Accessories

8-In-1 Hoop Kit

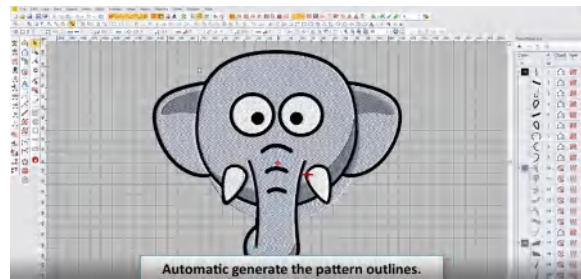


- With the FUJA 8-in-1 hoop Kit, your dreams to embroider on various types of difficult products have come true. It will enhance your embroidering experiences.
- FUJA 8-in-1 hoop set allows you to accomplish those very difficult embroidering challenges such as shirt pockets, socks, cap backs, bags, shirt sleeves, collar tips, gloves, cuffs of sleeves etc.



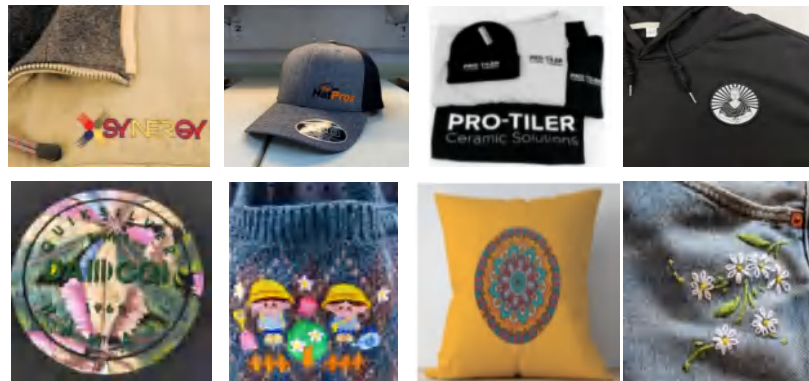
FUJA SMART EMB CAD software

Support the popular embroidery format DST/DSB



Application

Design shop/embroidery shop/sewing shop/printing shop/embroidery factory/apparel factory,etc..



Suited for all embroidery types

Brand-new technology



Shenzhen FUJA Machinery Co., Ltd
Address: AEE Industry Park, Song Bai Road,
Bao An District, Shenzhen, China.
Tel: +86 755 27203604